

SkinPen[®]
PRECISION ELITE

Our Latest Development
in Microneedling Technology

*BEYOND
BEAUTIFUL*

The Elite Experience



SkinPen® - Our Brand in Numbers

13¹

years of
proven innovation

60+¹

countries with worldwide
distribution

90+¹

validation studies supporting
quality, safety and performance

96%¹

customer satisfaction
among SkinPen® users

18,000+¹

aesthetics practices worldwide
delivering SkinPen® treatments

5 million+¹

Treatment Kits sold

High Satisfaction Spreads the Word



90%

of patients said they noticed the
improvement in the
appearance of acne scars in the
treated area at 6 months
post-treatment²

96%

of SkinPen® providers
expressed high satisfaction³

Offer Your Patients the Elite Experience

Give your patients the power of their own natural collagen for youthful rejuvenation⁴

6 Indications:



Acne Scars



Surgical Scars



Enlarged Pores



Fine Lines & Wrinkles



Stretch Marks



Pigmentation Conditions (Dyschromia)

5 Treatment Areas:



Face



Neck



Decolletage



Hands



Body

Medical Purpose: SkinPen® Precision Elite Microneedling System is a medical device intended to treat facial acne scars in adults aged 22 years or older.

Aesthetic Purposes: SkinPen® Precision Elite Microneedling System is also intended to help improve the cosmetic appearance of fine lines, wrinkles, stretch marks, surgical scars, enlarged pores and pigmentation conditions (dyschromia). Indications may vary by country.

Beautifully Engineered and Assembled in North America

FDA-Cleared Class II Microneedling Device and Procedure



Patented Intuitive Speed Control Technology for the optimal treatment of varying skin thickness

- Validated to maintain 7,000 RPM (+/- 70 RPM) despite skin thickness.
- Hassle-free with no manual speed adjustments required.



Cordless device powered by inductive charging

- Offers the versatility and safety of a cordless device without the worry of cords entering the treatment field and posing a risk of cross-contamination.
- Runs at optimal power regardless of the level of battery charge remaining.
- Guarantees your device is charged continuously with the power you need.



Efficient timing

- The Elite Efficient Timer (EET) expertly guides the timing of every treatment, helping to ensure accuracy and efficiency for every provider and procedure.



Ultrasonically sealed handpiece

- Combined with a custom Bio-Sheath for handpiece, validated to prevent fluid ingress through the sheath seam or the cartridge-device interface.



The highest quality lithium battery

- We stand by our device with reliable, consistent and high quality technology.
- Medical-grade motor performs continuously for 6 - 7 hours with a fully charged battery.



Real-time communication

- The Interactive Digital Display (IDD) provides intuitive prompts, battery life status and troubleshooting guidance, helping to instill confidence that every treatment is optimised.



World-class ergonomic design

- Tested by physicians and designed for optimal user comfort.
- Perfectly balanced to avoid user fatigue.
- Precisely weighted for optimal skin contact.
- No cumbersome button controls to adjust speed. The intuitive speed control technology does it for you optimally.



LED smart technology for optimal performance

- Software-driven technology communicates battery life, as well as provides troubleshooting mechanism.



7 Years Warranty*

- A lasting investment for your practice.
- * Terms and Conditions apply



The Technology You and Your Patients Can Trust

FDA-cleared Elite Cartridge, engineered in North America



Treatment with minimal trauma

- ActiSine™ Technology delivers advanced active retraction, reducing the risk of scratching or dragging. Less risk of trauma offers greater opportunity for patient safety, comfort, and results.



Simple installation, seamless setup

- The ECU securely locks into place with a simple twist, eliminating the risk of accidental lockout.



Confidence with Connect

- SkinPen Connect digitally recognises and verifies every ECU for authenticity and single use.



Focused field of view

- SkinPen® Precision Elite encourages proper hand placement on the device, ensuring visibility during the procedure, and offering precise treatment.

Minimise back flow and risk of cross-contamination

- Validated single-use-lock-out feature: Designed so that only one patient can be treated with each sterile Elite Cartridge Unit (ECU) for one-time-use and safety.

Validated to penetrate to the depth selected

- Ensures precise and reliable depth penetration up to 2.5 mm.
- Validated for the device to perform at the specified depth deemed safe for patients.

Complete insertion and retraction of needles

- Reciprocating mechanism is housed in the disposable needle cartridge for precise calibration.
- Unlike unreliable spring reciprocating mechanisms used in other devices, SkinPen® Precision Elite's coupled reciprocating mechanism allows for complete and consistent insertion and retraction of the needles on every rotation.

Needles validated to stay sharp at least 80 minutes in use

- Fourteen stainless steel surgical-grade needles validated for sharpness, durability and penetration depth.
- Needles perform consistently regardless of the skin thickness or texture while delivering 1,600 micro-channels per second.

* Data on file. For complete FDA clinical trial summary and information on how to use the SkinPen® Precision Elite microneedling device, visit skinner.com/international



Discover the Uniqueness and High Value of SkinPen® Precision Elite's All-In-One Treatment Kit

All-in-one safety and convenience treatment kit*



1

Elite Cartridge Unit (ECU)

EO (Ethylene Oxide) sterilised, disposable medical microneedling cartridge. Patented, FDA-cleared, and validated for high performance and safety. One-time use per patient.



2

Skinfuse® Lift HG glide gel, (15 mL)

Skinfuse® Lift HG glide gel is part of the FDA-cleared protocol developed for safe and effective microneedling procedures. It is a lightweight, water-based topical applied to the skin just prior to the treatment and serves as a mechanical barrier reducing friction at the surface of the skin and improving patient comfort. Lift HG does not contain drugs or biologics and is non-cytotoxic.



3

Skinfuse® Rescue Calming Complex, (10 mL)

Cosmetic calming complex to be applied liberally AM/PM, as needed to soothe and calm skin. It contains magnesium, zinc, copper, ethyl macadamiate and sodium hyaluronate. Suggested to be used 24 hours post treatment.



4

Custom fit disposable Bio-Sheath

Durable, single-use sheath designed to minimise the potential of cross-contamination between patients.

* Content of Treatment Kit may vary by country.

The BIOJUVE® Premium Biocellulose Masque

A cooling, soothing sterile water masque for post-procedure care



May be purchased separately in cases of 24.



Appropriate for all skin types.



Offer 1–3 masques to your patients for home use when numbing decreases and discomfort may increase.



Safe for use immediately post-procedure.

Acne Scars

Appearance of Acne Scars*



Female
Procedures: 6

Photo courtesy of Cape & Powell, Licensed Acneology, Aesthetic Center, LLC, Malibu, CA

80%

of patients noticed improvement in how their acne scars looked at 1 month of treatment

90%

of patients noticed improvement at 6 months of treatment

0 1 2 3 4 5 6

*Data on file. For complete clinical trial summary and information on how to use the SkinPen® Precision microneedling device, visit skinpen.com/international

Based upon a clinical study involving 41 patients conducted to support the safety and effectiveness of the SkinPen® Precision System for the treatment of acne scars on the face. Patients were treated on day 1, day 30, and day 60, with follow-up visits at 1 month and 6 months after the final (day 60) treatment.*

Fine Lines & Wrinkles on the Neck



Female
Procedures: 1

Photo courtesy of IMC3 Training Center, Irvine



Female
Procedures: 4

Photo courtesy of SkinPen® Precision Clinical trial



Female
Procedures: 4

Photo courtesy of SkinPen® Precision Clinical trial



Before

Female
Procedures: 4



After

Photos courtesy of: Mithras® Flexion III clinical trial.



Before

Female
Procedures: 5



After

Photos courtesy of: Arboxa Microceutic®.

Stretch Marks



Stretch Marks

Stretch marks can be caused by an overextension of the skin. They can be found on men and women but are twice as frequent in women.

There is little evidence for prevention other than keeping the skin well moisturised. Stretch marks tend to start as red discolouration and age into atrophic white stretch marks.

Normal Skin

Smooth and elastic, with intact collagen and elastin fibres maintaining firmness and structure.

Striae Rubrae

Smooth and elastic, with intact collagen and elastin fibres maintaining firmness and structure.

Striae Albae

Mature white stretch marks where collagen remodelling leads to thinning and loss of pigmentation.

Mechanism of Action

- Promotes the removal of old, damaged collagen.
- Induces keratinocyte proliferation, releasing growth factors that promote collagen deposition by fibroblasts and elastin deposition.
- Modulates the expression of several genes in the skin (vascular endothelial growth factor, fibroblast growth factor, epidermal growth factor, collagen type I and III) that promote extracellular matrix remodelling.

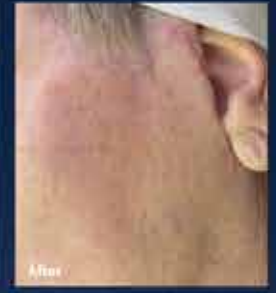
Surgical Scars



Brachioplasty scar 6 weeks postoperatively before first microneedling treatment

Brachioplasty scar 8 weeks after third microneedling treatment

Photos courtesy of: Clayton R. Brannon M.D.; Sheek, Casey Gene D.O.; Chopra, Vinod M.D. Microneedling Outcomes in Early Postsurgical Scars. *Plastic and Reconstructive Surgery*. September 2022 - Volume 150 - Issue 3 - p 557e-561e doi: 10.1097/PRS.0000000000001466



Face lift incision scar 13 weeks postoperatively before first microneedling treatment

Face lift incision scar 8 weeks after third and final microneedling treatment

Photos courtesy of: Clayton R. Brannon M.D.; Sheek, Casey Gene D.O.; Chopra, Vinod M.D. Microneedling Outcomes in Early Postsurgical Scars. *Plastic and Reconstructive Surgery*. September 2022 - Volume 150 - Issue 3 - p 557e-561e doi: 10.1097/PRS.0000000000001466

Enlarged Pores



Female
Procedures: 1

Photos courtesy of: The Low Estle, Detroit, MI



Female
Procedures: 2

Photos courtesy of: The Low Estle, Detroit, MI

Pigmentation Conditions (Dyschromia)



Female
Procedures: 4

Photos courtesy of: Rosengark Research, Dr. Sonja Sattler



Female
Procedures: 2



Female
Procedures: 4

Photos courtesy of: Rosengark Research, Dr. Sonja Sattler

Offer Your Patients the Elite Experience

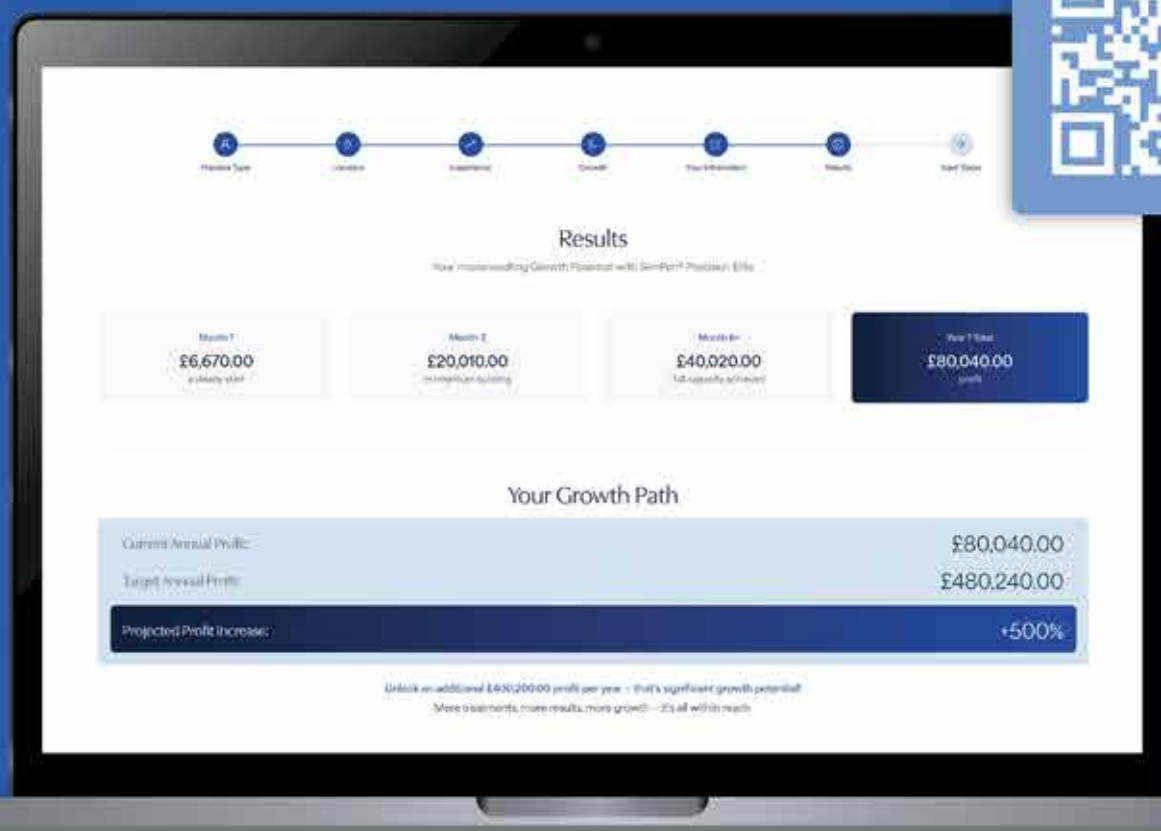
Calculate Your Return of Investment

High-revenue generator:

- High value of the all-in-one safety and convenience treatment kit.
- Delegable. Easy-to-use.
- For a wide variety of patients. Suitable for all skin tones and types.
- Gateway for patients new to aesthetic treatments.
- Versatile. One single cartridge can treat multiple target areas.
- Proven to show high patient satisfaction and recommendation to others to grow your practice.*
- SkinPen® Precision Elite can expand your current patient treatment offerings.
- Recommendation of three to six treatments ensures patients will return.
- Happy patients are more likely to return to your practice.

Microneedling ROI Calculator

Discover your practice's profit potential with our professional microneedling solutions



Bring New Patients to Your Practice with SkinPen® Precision Elite



Clinically Proven Safe and Effective*

Ideal for most patients, including those who are not candidates for heat or chemical-based therapies.



For All Skin Tones and Types Year-Round*

Versatile: Ideal for all skin types; (Fitzpatrick I-VI). For most patients and all-year-round.**



Regenerative Approach

Developed to harness the skin's natural wound-healing process for visible skin rejuvenation.



Simple, Quick, Comfortable and Affordable

Numb, treat and hydrate in as little as a 30-minute procedure. For quick results and high reward.



Little to No Downtime

Patients want to get back to work and their lives quickly with little to no downtime.

*Immediately avoid sun exposure on the body of treatment. You may return to sunbathing one 24 hours following the procedure. Continue to minimize sun exposure for 72 hours following the procedure.



1. Data on file. Volume 1 of SkinPen® Precision.

2. For important safety information, including instructions for use, contraindications, warnings, precautions, and clinical studies, (1) Patients should consult the Patient Labeling; (2) Healthcare professionals should consult the Instructions for Use or User Manual. Clinical data and information are derived from regulatory filings, Crown Aesthetics' clinical studies, internal research, and consumer surveys.

3. FDA De Novo Classification: SkinPen® Precision System is classified under FD/Novo/DEN 16029 as a Skin Pen device. Regulation 878-4136. Product Code QAL for improving the appearance of facial wrinkles.

4. FDA 510(k) Clearance: SkinPen® Precision System is cleared under 510(k) number K202241 for improving the appearance of wrinkles on the neck.

5. Clinical Studies: Select data supporting SkinPen® Precision System are based on studies conducted by Crown Aesthetics.

6. Consumer Satisfaction Survey: Consumer satisfaction data is sourced from the Crown Aesthetics

7. Consumer Satisfaction Survey (October 2022). Data on file.

8. Data on file. Fear-Free and Versatile Study (D-166).



REVANCE®

Phone: +44 28 9334 4411 | Mail: info@skinpen.com
Web: skinpeninternational.com

*SkinPen® and BIOJUVE® are owned by Crown Aesthetics, a Revance company

SkinPen®